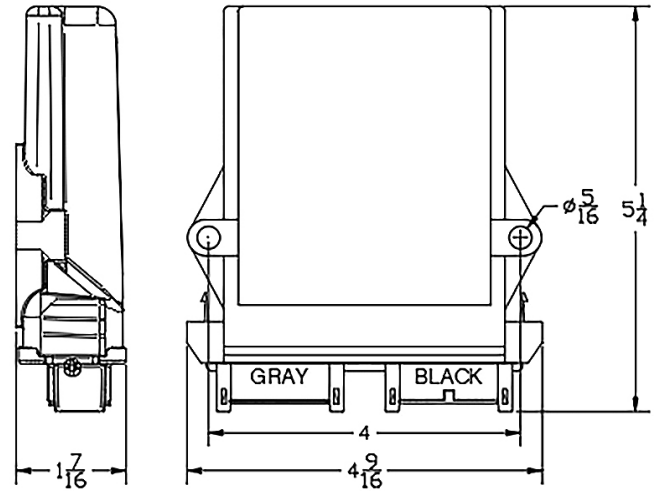
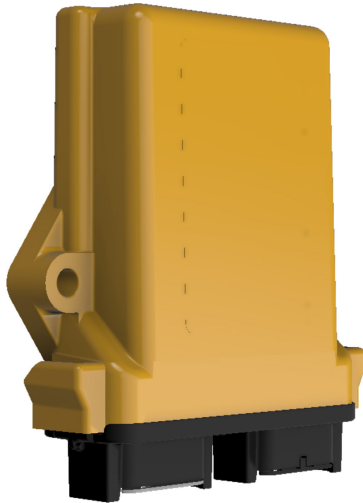


Receiver – 2.4GHz & 900MHz LXB

The LXB series receiver features 16 discrete solid-state outputs (8 of which can be configured as analog PWM outputs), LED feedback, and a J1939 CAN (Controller Area Network) connection.



TransmitterOptions

- 2.4 GHz Stryker, Stryker Pro, Stryker Pro+
- 900 MHz Ranger

Applications

- Machine Control
- Construction Equipment
- Industrial Control System

RECEIVER SPECIFICATIONS

Supply Voltage	9-32 VDC
Digital Channel Outputs	16 Solid State; (8 configurable as analog outputs)
Analog Channel Outputs	8 PWM (Pulse Width Modulation)
Output Ratings	3 Amps (Internally Limited)
Output Diagnostics	LED Feedback to Indicate Open Load and Overload conditions
CAN Connections	J1939 (2-wire)
Antenna	Internal
Dimensions	Approx. 5.25"x4.5"x1.5"
Weight	Approx. 8 oz.
Enclosure	IP 67

900 MHZ GENERAL SPECIFICATIONS

P/N: 8212	
Frequency Range	ISM 902-928 MHz
Frequency Control	7 Frequency Hopping Channels (Software Selectable)
Modulation	DSSS (Direct Sequence Spread Spectrum)
Error Correction	Automatic Error Detection and Automatic Retransmission
Operating Temp.	-20C to 54C (-4F to 129F)
Humidity	Up to 90% RH, non-condensing

2.4 GHZ GENERAL SPECIFICATIONS

P/N: 8210	
Frequency Range	2400-2483.5 MHz
Frequency Control	42 Frequency Hopping Channels (Software Selectable)
Modulation	MSK
Security	Channelization, System ID, and Vendor ID
Operating Temp.	-20C to 54C (-4F to 129F)
Humidity	Up to 90% RH, non-condensing

